

# Woodway Police Department

- Staff: 5 officers from surrounding jurisdictions and one records specialist. Each officer works 20 hours per month.
- Traffic safety is a priority: All officers have traffic safety expertise – either assigned (or will be assigned) to traffic patrol units at their home agencies.
- Deputy Chief Strum, Officer Shin, Officer Morris, Officer Kojima, Officer Nichols, and Records Specialist Custer.



A close-up, low-angle shot of a police car's emergency lights at night. The lights are illuminated, showing a mix of red and yellow colors. The background is dark and blurred, suggesting an urban or street setting. A large, semi-transparent white circle is overlaid on the right side of the image, containing text.

# Schedules and Mission

- Officers work in targeted areas, during specific times, to address emerging public safety concerns through vigilance and deterrence.
- Mailbox Thefts
- Residential Burglary
- Traffic Safety



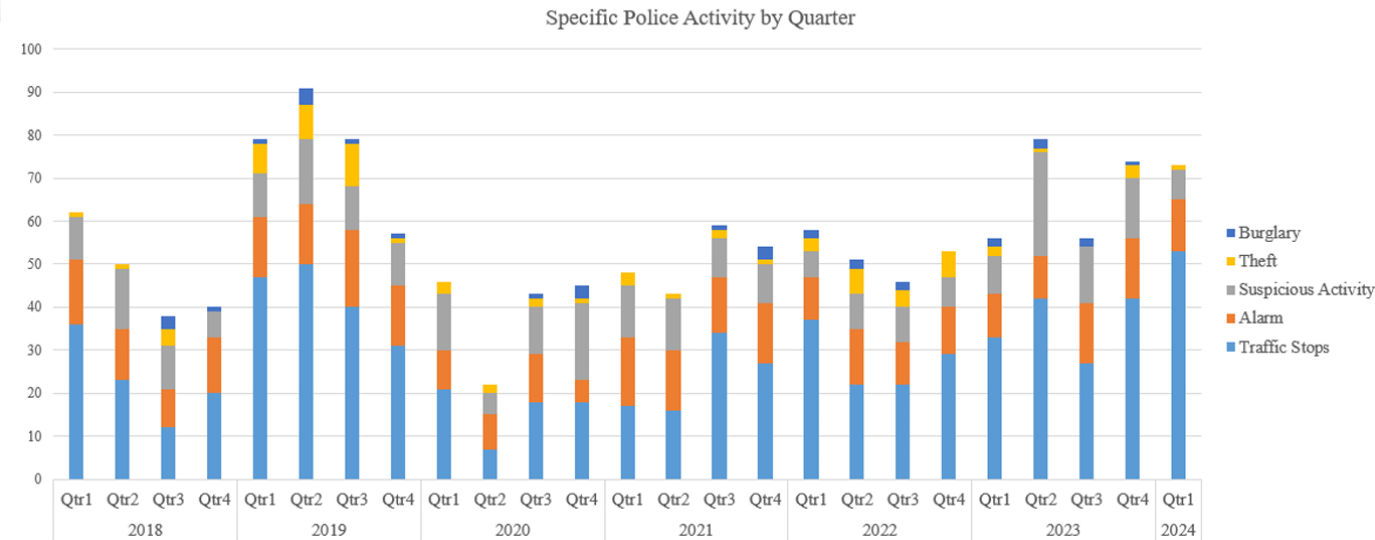
# Edmonds Police Department Services

- 24/7 emergency response.
- Records management.
- Public disclosure.
- Evidence storage.
- Prosecutor follow-up and investigative functions.
- Media relations in certain circumstances.
- Response time for Priority 1 "in-progress" calls.

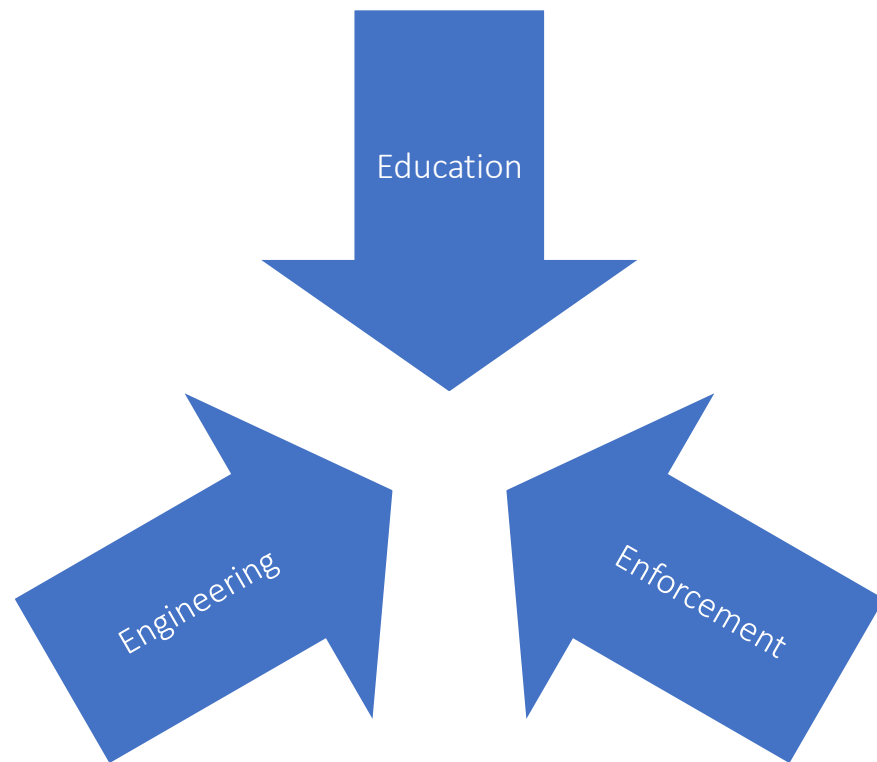
## 2018 THROUGH Q.1 2024 POLICE ACTIVITY BY QUARTER

# Woodway Police Department Calls

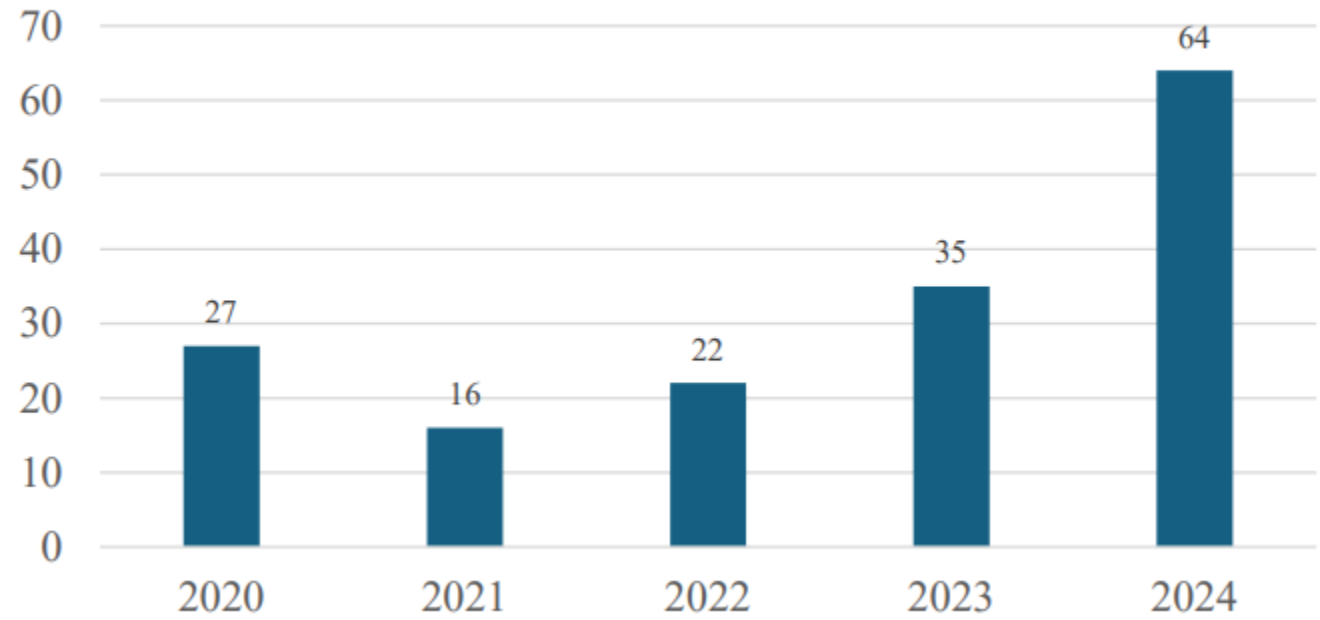
- Woodway had 170 calls to 911 in 2023.
- Traffic stops are a significant portion of the overall police activity in Woodway.
- Alarm calls and suspicious activity/persons calls.
- First Quarter 2024 notables include mail theft, DUI and negligent driving.
- No residential burglaries in the first quarter.



# How do we improve roadway safety?



Q.1 Infractions - Comparison



# Traffic Safety



## State of Washington Tickets by Location

From: 1/1/2024 To: 4/17/2024

For:

City Of Woodway

Woodway PD (WYP)

Location	Infraction Traffic	Infraction Non-Traffic	Criminal Traffic	Criminal Non-Traffic	Total Tickets
N DEER DR ALGONQUIN RD	1	0	0	0	1
WOODWAY PARK ROAD 238TH ST SW	1	0	0	0	1
3RD AVE S	1	0	0	0	1
TIMBER LANE	19	0	0	0	19
S DEER DR WACHUSETT DR	1	0	0	0	1
WACHUSETT RD TIMBER LN	0	0	1	0	1
WOODWAY PARK RD	2	0	0	0	2
WOODWAY PARK ROAD	40	0	0	0	40
WOODWAY PARK ROAD MAKAH RD	5	0	0	0	5
<b>Report Totals:</b>	<b>70</b>	<b>0</b>	<b>1</b>	<b>0</b>	<b>71</b>



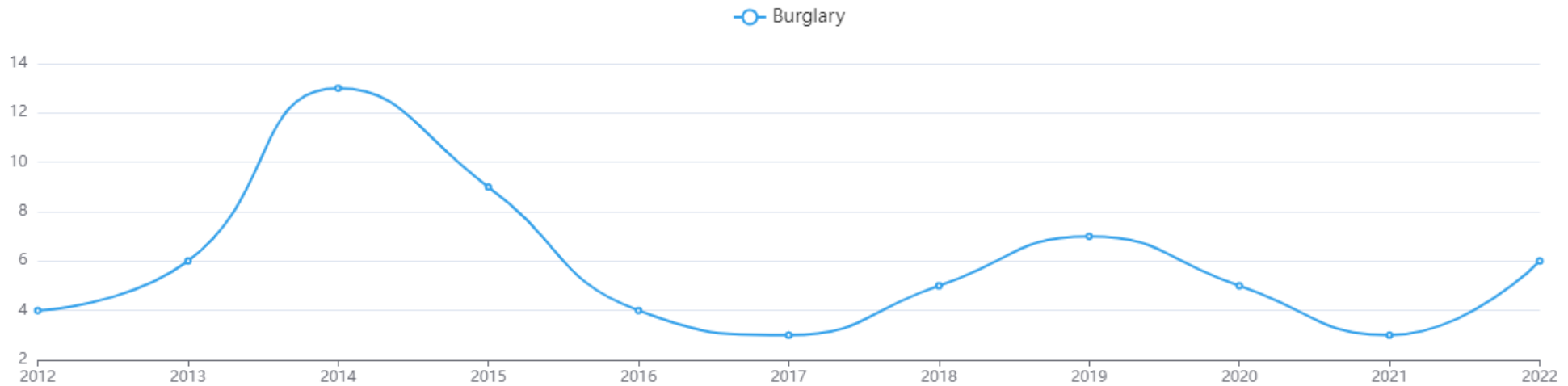
# Crime Trends – Woodway Burglaries

Click legend to show/hide elements

Chart Type: **Line** ▾

⬇️ DOWNLOAD

### Burglary Offense Counts in Woodway Police Department



# Men accused of over 200 burglaries in Snohomish County and elsewhere

The suspects are believed to be connected to an organized crime group burglarizing the homes of Asian Americans.

By Jonathan Tall  
Friday, June 23, 2023 1:26pm LOCAL NEWS EVERETT



SEATTLE — Detectives arrested three men Thursday believed to be part of an organized crime group responsible for over 200 burglaries across western Washington, according to the Snohomish County Sheriff's Office.

The three men, aged 24, 29 and 30, were arrested by detectives from four local and federal agencies in Seattle. The losses from the burglaries exceeded \$4 million in cash and jewelry, police said.

In November 2021, the sheriff's office robbery and burglary unit discovered "a string of approximately 20 very similar burglaries" of homes of Asian American families in Snohomish County, according to the sheriff's office.

Agencies from Snohomish, Whatcom and King counties collaborated on the investigation. Detectives learned a group of three men was targeting homes from Bellingham to south Seattle, according to the sheriff's office.

Police booked the men into jail in King County on "multiple counts" of first-degree residential burglary and second-degree robbery. They are expected to be transferred to Snohomish County Jail on Friday evening, sheriff's office spokesperson Courtney O'Keefe said.

In the past year, there have been three home invasions in Snohomish County involving three suspects wearing dark clothing and masks. In January, three men reportedly wearing face masks reportedly forced their way into a home in Mill Creek, taking "money and valuables," according to the Mill Creek Police Department.

In May, a Brier family was held at gunpoint by three people wearing ski masks and hoodies, according to Brier police. The intruders reportedly forced their way into the house and attacked one resident.

In August 2022, Irah Sok was killed in her Everett home in the 2600 block of 96th Street SE in an apparent home invasion.

The three arrests Thursday had no connection to Sok's death or the other home invasions, O'Keefe said.

The Seattle Times | Nation & World | Newsletters | Log In | Subscribe

LOCAL BIZ NATION SPORTS ENTERTAINMENT LIFE HOMES OPINION | THE TICKET JOBS EXPLORE | All Sections

Nation World Nation & World Politics Oddities

Nation | Nation & World | Oddities | World

## Sophisticated 'burglary tourists' fly from South America to rob wealthy homes, LAPD says

March 17, 2024 at 4:36 pm




The Los Angeles Police Department Headquarters is seen on Feb. 8, 2022, in Los Angeles. (Myung J. Chun/Los Angeles Times/TNS)

# Burglary Update

- 2023 - 3 Residential Burglaries.
- 1 Attempt (suspects fled after being spotted).
- Organized groups trending.
- Video



# Regional Crime Trends – Violent Crimes

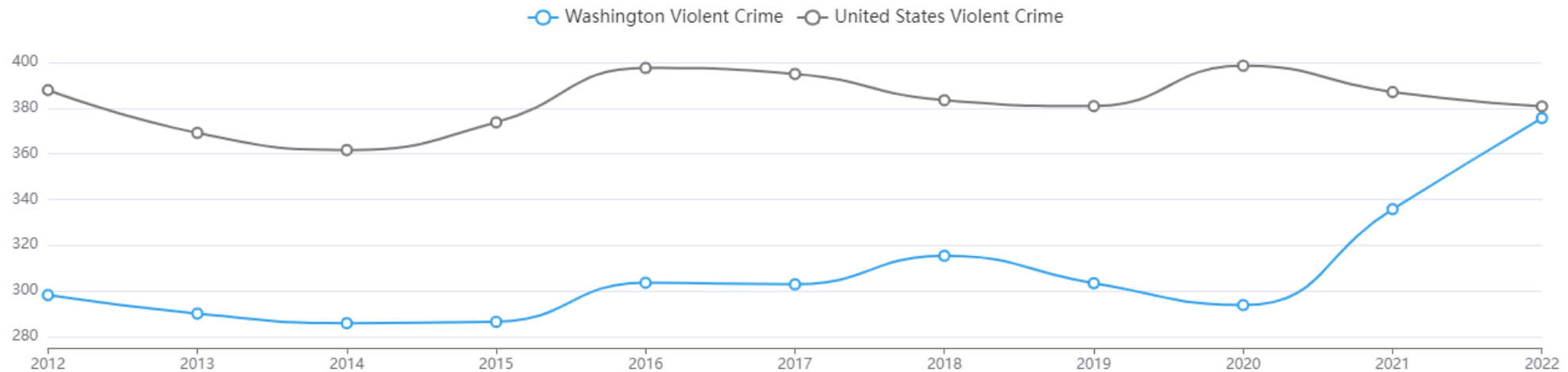
Due to the full transition to NIBRS and the lack of data for agencies that are not fully transitioned, the 2021 data year cannot be added to the 5-, 10- or 20-year trend presentations that are based in traditional methodologies used with summary data.

*Click legend to show/hide elements*

Chart Type: **Line** ▾

⬇️ DOWNLOAD

## Rate of Violent Crime Offenses by Population



Rate per 100,000 people, by year

# Regional Crime Trends – Motor Vehicle Thefts

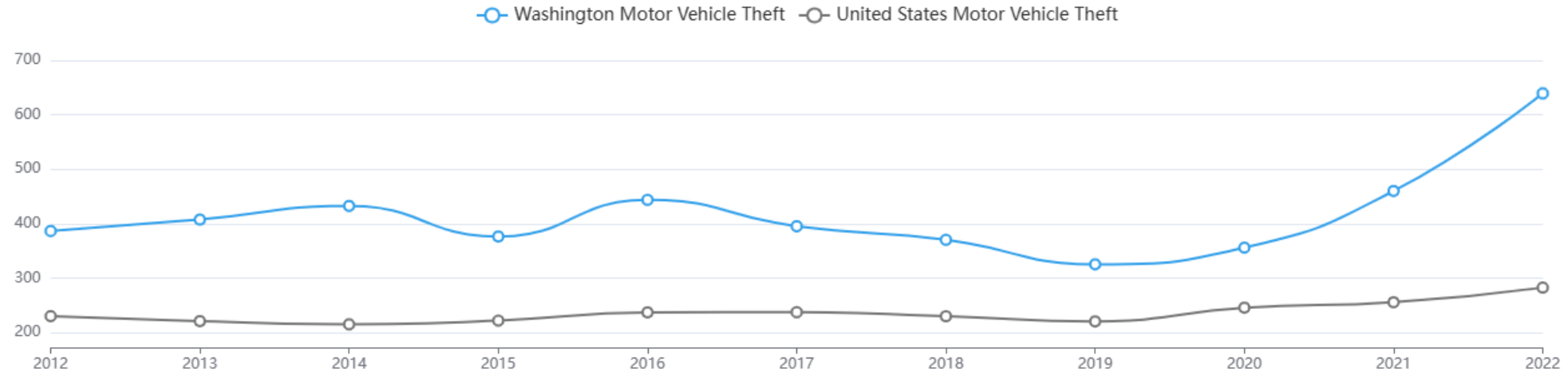
Due to the full transition to NIBRS and the lack of data for agencies that are not fully transitioned, the 2021 data year cannot be added to the 5-, 10- or 20-year trend presentations that are based in traditional methodologies used with summary data.

*Click legend to show/hide elements*

Chart Type: **Line** ▾

⬇️ **DOWNLOAD**

### Rate of Motor Vehicle Theft Offenses by Population



Rate per 100,000 people, by year

# Regional Crime Trends – All Property Crimes

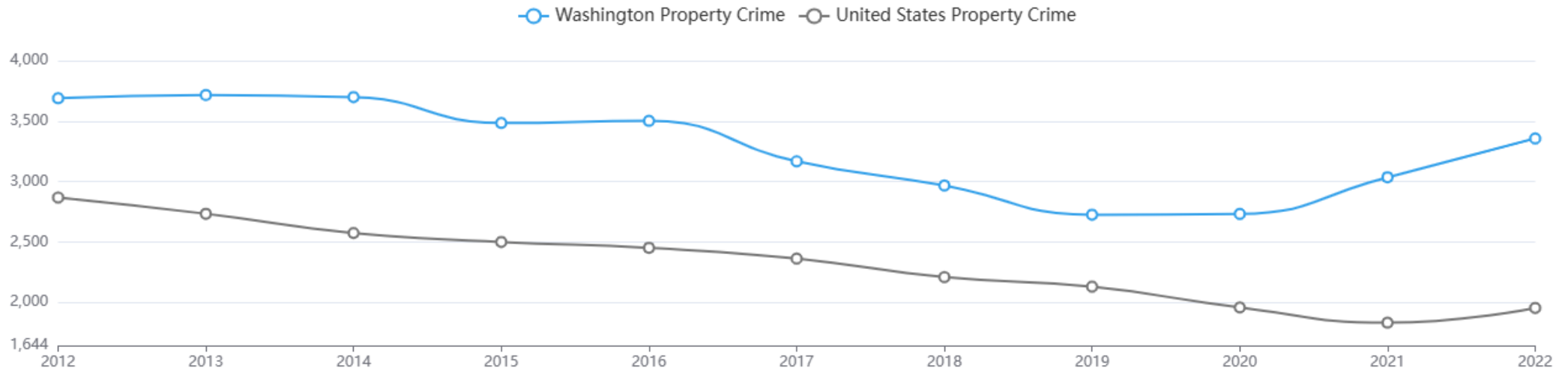
Due to the full transition to NIBRS and the lack of data for agencies that are not fully transitioned, the 2021 data year cannot be added to the 5-, 10- or 20-year trend presentations that are based in traditional methodologies used with summary data.

[Click legend to show/hide elements](#)

Chart Type: **Line** ▾

[DOWNLOAD](#)

### Rate of Property Crime Offenses by Population





---

## Challenges - 2024 Update

- Pursuit law – Violent Crime and DUI only. Update - New legislation in 2024.
- Staffing crisis and recruiting. Mandatory shift coverage. This is improving, slowly.
- Budget for prosecution. Snohomish County Prosecutor's Office. Triaging cases. Staffing. Case load. Declines - Statute of Limitations.
- Accountability for juvenile crime.



## Solutions

- Partnerships with our community.  
**Community members must feel comfortable calling 911.**
- Crime Prevention Programs - Neighborhood Watch.
- Vigilance through strict enforcement.
- Deterrence through increased patrols and high visibility.
- Flock Cameras?
- Community concerns, input, and ideas.